



# CHAMBERLIN HALL VENUE HIRE

Chamberlin Hall Close,  
Bildeston, IP7 7EZ

[chamberlin.bookings@gmail.com](mailto:chamberlin.bookings@gmail.com)

[www.chamberlinhall.org](http://www.chamberlinhall.org)

A photograph of the interior of Chamberlin Hall. The room has a polished wooden floor and a stage at the far end covered by a large blue curtain. Above the stage, a row of stage lights is mounted on the ceiling. The room is viewed through a glass door on the right, which has a 'No Smoking' sign and some other notices. A semi-transparent teal box is overlaid on the left side of the image, containing the title and a paragraph of text.

## INTRODUCTION

Opened in March 1996, Chamberlin Hall is a welcoming community venue at the heart of Bildeston village. This large, modern facility offers the perfect versatile space for meetings, community groups, weddings, and events. The hall benefits from ample parking, Wi-Fi, a variety of room options, a fully equipped kitchen, a well-stocked bar, and step-free access. Beyond the hall itself, guests can enjoy the veranda overlooking the bowls green, a well-maintained children's play area, and attractive grounds that provide a relaxed setting for any occasion.

# OUR SPACES



# FACILITIES – INDOORS

ROOM	SIZE	CAPACITY	FEATURES	SUITABILITY
<b>MAIN HALL</b> (Step-free access)	13.7m x 9.7m	250 standing 150 seated (for stage) 100 seated (for dining)	Wooden sprung floor High ceilings with fully equipped lighting rig PA system Stage 4m x 5.5m (and backstage area) Full size badminton court Disabled access	Weddings music/comedy nights Parties Workshops Exhibitions Sports classes Drama/Theatrical productions Corporate 'Away Days' and Conferences
<b>SIDE ROOM</b> (Step-free access)	7.2m x 6.2m	30-40 seated	Carpeted Can be separate or combined with Main Hall hire Projection equipment can be hired (by prior arrangement)	Meetings Small gatherings Small space hire eg; photography studio

**KITCHEN** - Fully equipped kitchen with commercial oven, dishwasher, heat cabinet, plumbed urn.  
Crockery service for 100 available on request.

**BAR** - Fully stocked, staffed bar available to hire for events

**TOILETS** - Men's, women's and accessible toilets

## FURNITURE

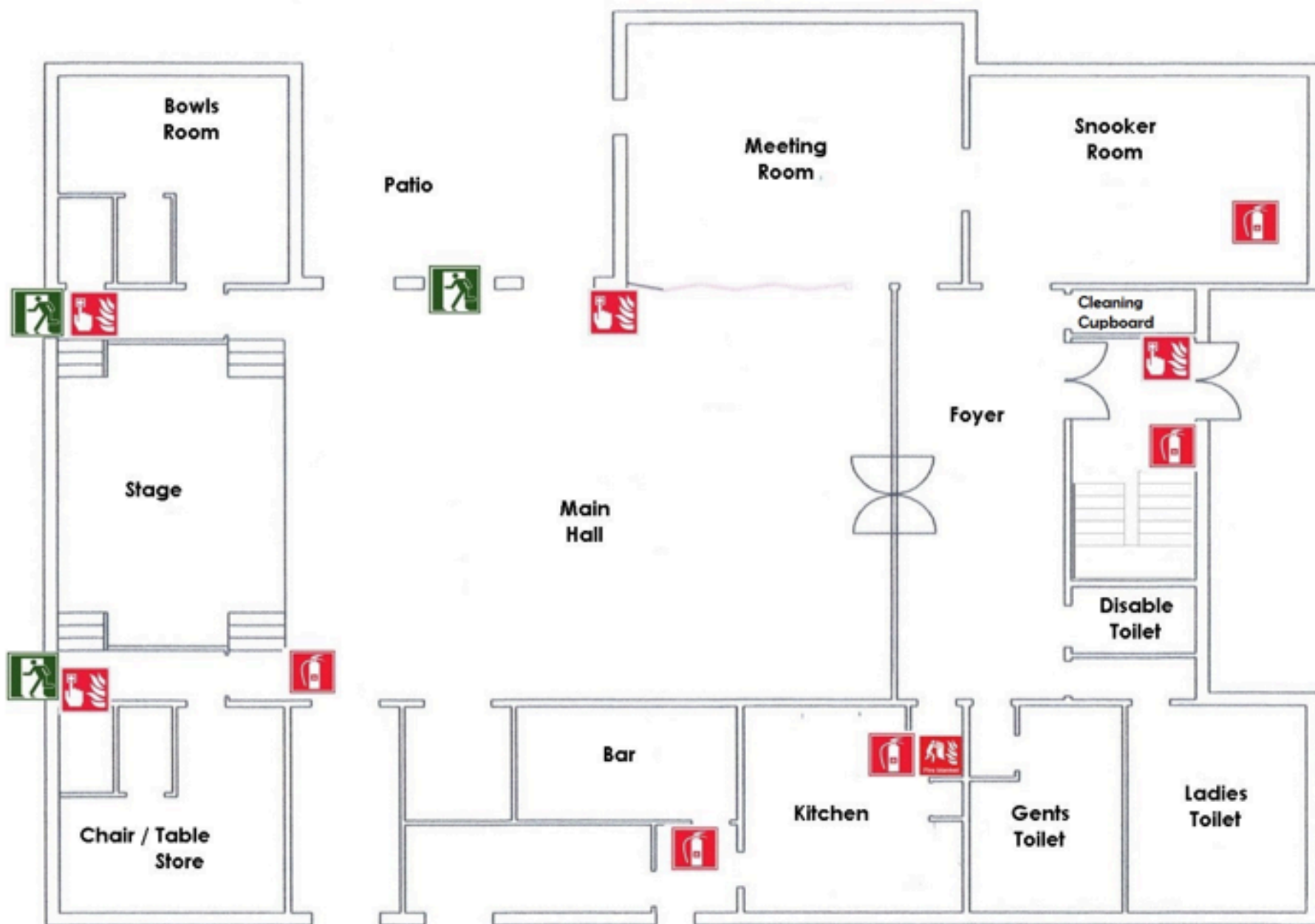
**Tables** - 28 x large rectangle trestle tables, 8 x small trestle tables, 10 x 5ft round tables, 6 x 2.6ft tables.

**Chairs** - Approx. 200 high-quality chairs

# FACILITIES – OUTDOORS

- Well-maintained grounds
- Outside veranda with seating
- 66 car parking spaces and 3 disabled spaces (cars can park near the doors if necessary for drop off and unloading)
- Outdoor play area for children off the car park
- Secure dog paddock (available via a membership to residents)





Key:  Fire Exit  Fire Alarm  Fire Extinguisher  Fire Blanket



# MAIN HALL

The Main Hall at Chamberlin Hall is a spacious, versatile venue with a wooden sprung floor and high ceilings, making it ideal for both social and active events. With room for up to 250 people standing, 150 seated theatre-style, or 100 for dining, it's a fantastic choice for weddings, conferences, music or comedy nights, dramatic performances, and private celebrations.

The hall's size and layout also make it perfectly suited to indoor sports, fitness classes, and children's parties – it can even accommodate a bouncy castle.

The hall features a raised stage with backstage area, complete with full lighting and sound system, making it perfectly equipped for entertainment and presentations.

A fully stocked bar is also available to hire, and our dinner crockery service for 100 can be provided on request. With its warm atmosphere and flexible layout options, the Main Hall offers a true blank canvas for your event.



# SIDE HALL (MEETING ROOM)

The Side Room provides a more intimate and adaptable space, comfortably seating 30–40 people. While it's perfect for team meetings, workshops, or small group training sessions, it also lends itself well to activities such as yoga, art and craft groups, or smaller fitness classes. The space has also proved popular as a studio photography venue thanks to its natural layout and privacy. Projection equipment can be arranged in advance if required, making it practical for both professional and community use.

The Side Room and Main Hall can be booked together to provide additional space or a 'breakout' area.





# FACILITIES

Chamberlin Hall is fully equipped with everything you need to host your event. A commercial kitchen makes it simple to provide catering, whether you're arranging a full wedding breakfast or light refreshments for a meeting. For larger occasions, a fully stocked bar is also available to hire, bringing added convenience for you and your guests.

The building is fully accessible with step-free access throughout (except the stage) and includes men's, women's and accessible toilets.

Free Wi-Fi is available throughout the venue.



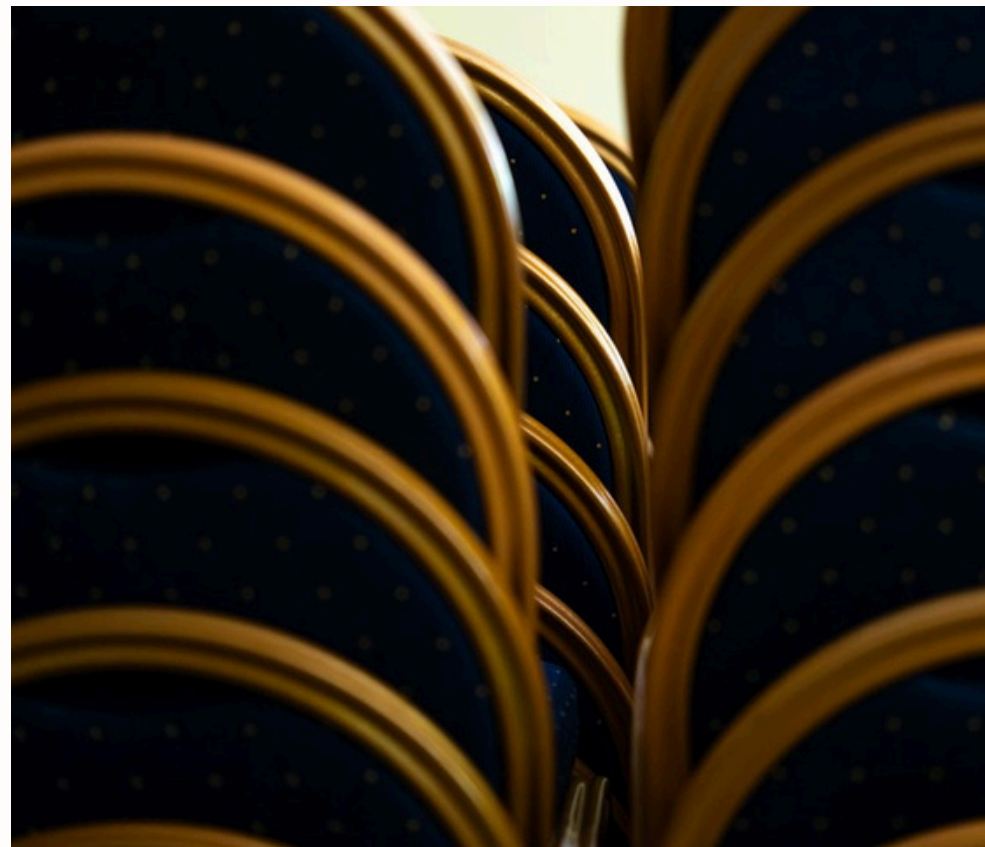
# EQUIPMENT

A wide range of equipment is available to help you create the perfect setting for your event.

We can provide 200 high-quality chairs and a range of tables to suit different layouts, whether you're hosting a conference, a banquet, or a community activity.

A dinner crockery service for 100 can be hired for catered occasions, and projection equipment is available by prior arrangement.

Together, all of these options ensure you have everything you need to host a successful and well-presented event.





# OUTSIDE

Chamberlin Hall is set in well-maintained grounds, offering attractive surroundings for your guests. The hall benefits from a large car park with 66 spaces, including 3 designated disabled bays, with the option to drive right up to the entrance for convenient unloading or drop-offs.

The veranda overlooks the bowls green and provides a lovely seating area in warmer months, while families will appreciate the safe children's play area located just off the car park.

For Bildeston residents, a secure dog paddock is also available via membership, making the hall a true community hub inside and out.





# WEDDINGS





# WEDDING HIRE

Set in the heart of the beautiful Suffolk countryside, Chamberlin Hall offers a charming and versatile space for your special day.

With capacity for up to 100 guests seated for dining and 250 standing, it's perfect for both intimate gatherings and larger celebrations. The spacious hall includes a fully fitted kitchen for caterers, a stage area for evening entertainment, and a staffed bar to keep the party flowing.

Guests can enjoy the outside veranda, ample parking, and easy disabled access ensuring comfort and convenience for all.

Chamberlin Hall is a relaxed, welcoming venue that can be transformed to reflect your unique style and vision.

